



Sky Valley Volunteers

Chatsworth Kiwanis

8/21/2018



Climate Change, Drought, Disease, and the Shot Hole Borer



Polyphagous Shot Hole Borer



RCD Shot Hole Borer Survey



How can we save our native trees? Drought and Invasive Beetle impacts on Wildland Trees and Shrublands in the Santa Monica Mountains

Final Report for Los Angeles County Contract CP-03-44



Prepared by:

Rosi Dagit, Salvador Contreras, Russell Dauksis, Andrew Spyrka
Resource Conservation District of the Santa Monica Mountains

Natalie Queally, Kelsey Foster, Ariana Nickmeyer, , Nick Rousseau, Emil Chang
NASA DEVELOP National Program Team, California- JPL, Fall 2017

Dr. Natasha Stavros
Jet Propulsion Laboratory, California Institute of Technology, Pasadena, CA, USA

December 2017



Simple Traps

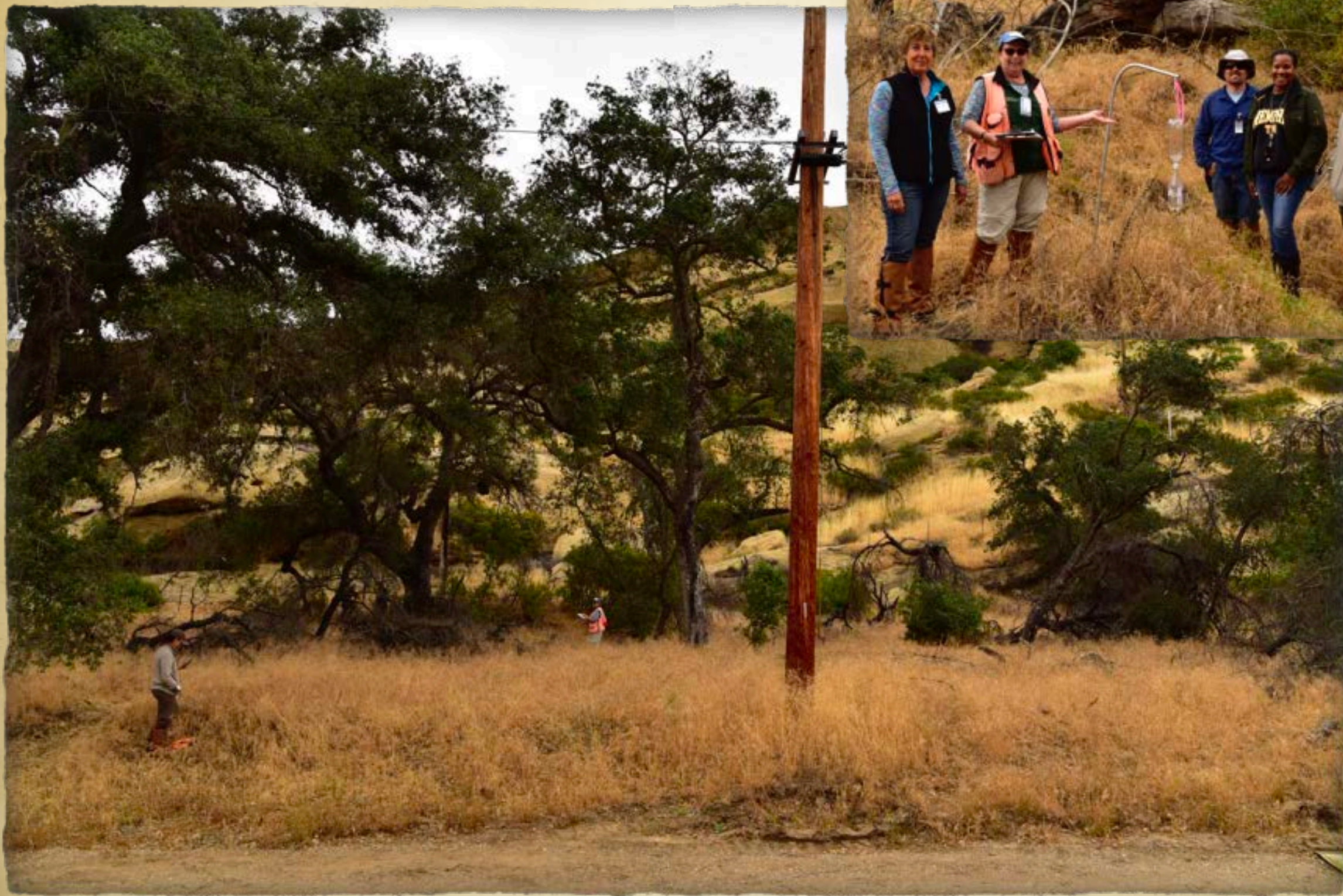


Table 7. Summary of alive and dead acres of oak woodlands and riparian woodlands in the SMMNRA 2013-2016 (based on RFAL calculated by NASA DEVELOP team)

Vegetation Type	Acres alive 2013	No. trees alive 2013	Acres dead 2013-2016	No. Trees Lost 2013-2016
Annual grass	26634		16391	
<i>C. megacarpus</i>	3445		726	
<i>C. spinosa</i>	1839		141	
Chaparral	16754		2931	
Coastal sage scrub - drought deciduous	27044		10851	
Coastal sage scrub- summer active	12795		4408	
<i>M. laurina</i>	35091		9865	
Oak woodland	2700	151,200	163	9,128
Riparian woodland	10514	367,990	3258	114,030
TOTAL acres	110183		32343	

013



014



015



016

**Dead Vegetation**

Dead Vegetation





Save Chatsworth, Inc.

DBA, The Sky Valley Volunteers



1st Planting day, 2/17/2018



Oak Rehabilitation Project

**SVV busy as the non-profit matures: What we need keeps coming our way.
Amazing!!!**

**First a huge thanks to Nick who led us to the truck. You have no idea....
Second a huge thanks to you the Kiwanis Club for the use of the Watering Tank
These two things gave us the jump-start we needed to launch SVV
Training for our volunteers from Tree People (Jack & Cody) and from the
Resource Conservation District of the Santa Monica Mountains (Rosi Dagit)
Secured a site at Orcutt Ranch Park for our future Operations Center**



Current Partnerships:

Rosi Dagit: RCDSMM

Tree People, SSMPA

Chatsworth Kiwanis Club

Boeing at the Santa Susana Field Lab

MRCA (Mountains Recreation & Conservation Authority) at Sage Ranch and Dayton Canyon

California State Parks at Santa Susana Pass State Historic Park (SSPSHP)



Volunteers:

Team of Board Members, Advisory Committee & Watering team

Total of 21 very dedicated volunteers

Website under construction.

Fundraising strategies & Go Fund Me page being developed

Logos for informational tri-fold, letterhead & business cards in the design phase

Nine volunteers watering at Santa Susana Field Lab & Sage Ranch twice a week

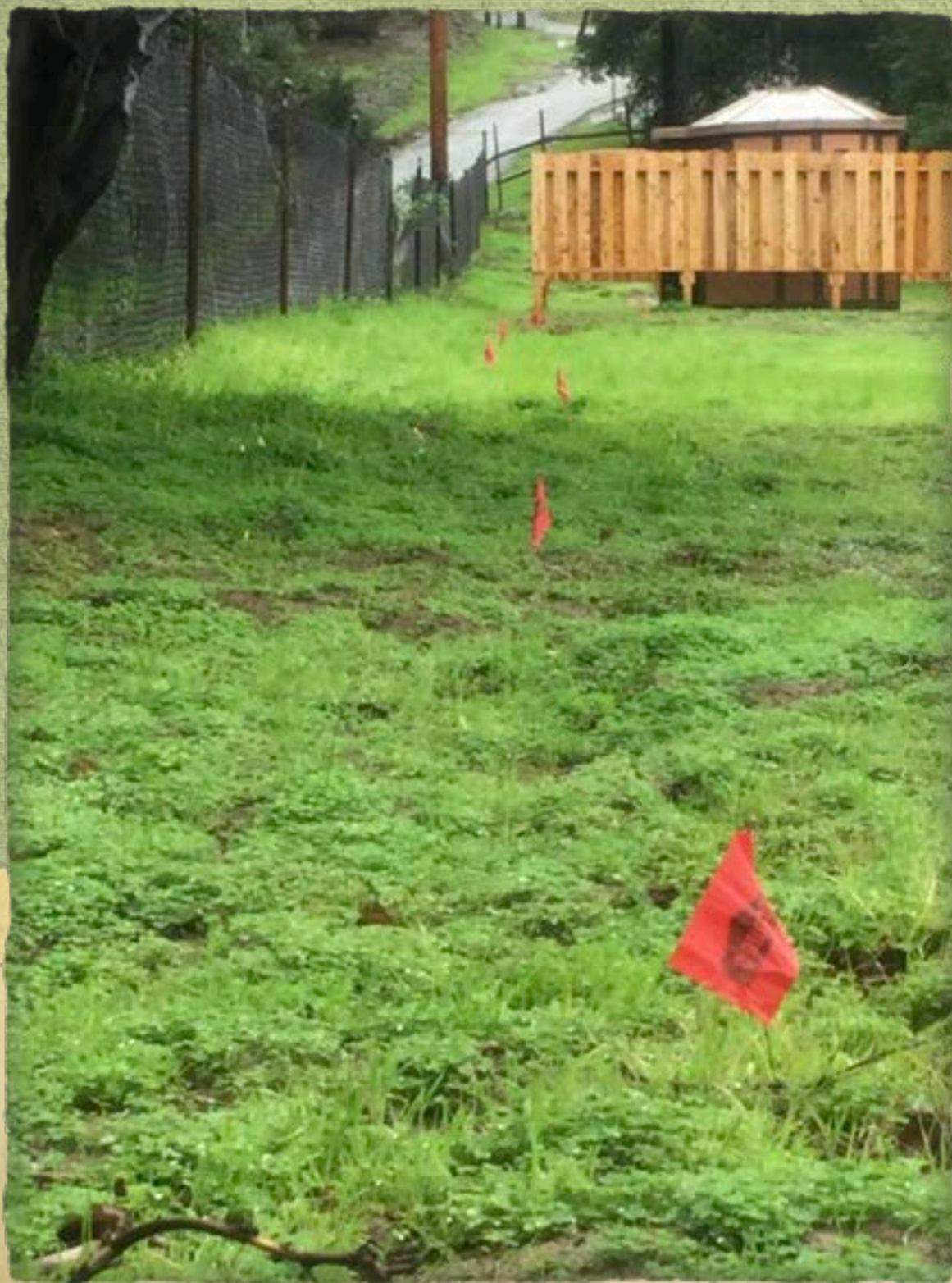
Four volunteers watering at Santa Susana Pass State Historic Park 2-3 x a week

One of whom is devising a drip watering system using the 210 Gallon Watering tank donated to us by Ann & Ray Vincent of the Historical Soc.

The other pair regularly pick up trash in and around the Park







Sage Ranch
56 total
30 still alive

Sky Valley
59 total
29 still alive

Andora St
15 Total
11 still alive

- Delivered 63 trees to TreePeople for distribution to schools throughout Los Angeles.
- Oakwood Cemetery, 20 trees
- Distributed to other properties, @75 trees
- City of Calabasas, 20 trees



Donations:

1 gallon planting pots donated which sets us up for the coming season

Refrigerator for seed storage & stratification

Three tiered desk for our training center

210 gal. water tank



Yet to come:
\$10,000 from LA County Supervisor 5th District Kathryn Barger
Shade house construction for the SVV operations





The Future is Now!

Rim of the Valley Unit

Santa Monica Mountains National Recreation Area

National Park Service
U.S. Department of the Interior



0 5 10 Miles

Coordinate System: NAD 1983 UTM Zone 11N
The NPS makes no warranty, express or implied, related to the accuracy or content of this map.

- | | |
|---|--|
| <ul style="list-style-type: none"> Proposed Boundary (shading indicates Rim of the Valley Unit) Santa Monica Mountains National Recreation Area San Gabriel Mountains National Monument | <p>Existing Protected Areas</p> <ul style="list-style-type: none"> National Park Service US Forest Service (USFS land is excluded from boundary adjustment) Other Federal, State, and Local Protected Areas Proposed Rim of the Valley Trail Pacific Crest Trail |
|---|--|

ROV!
Politics
PLAN

Largest Urban Natural Preserve
National Monument
National Park
UNESCO World Heritage Site

Environmental Easement,
initiated in 2017.

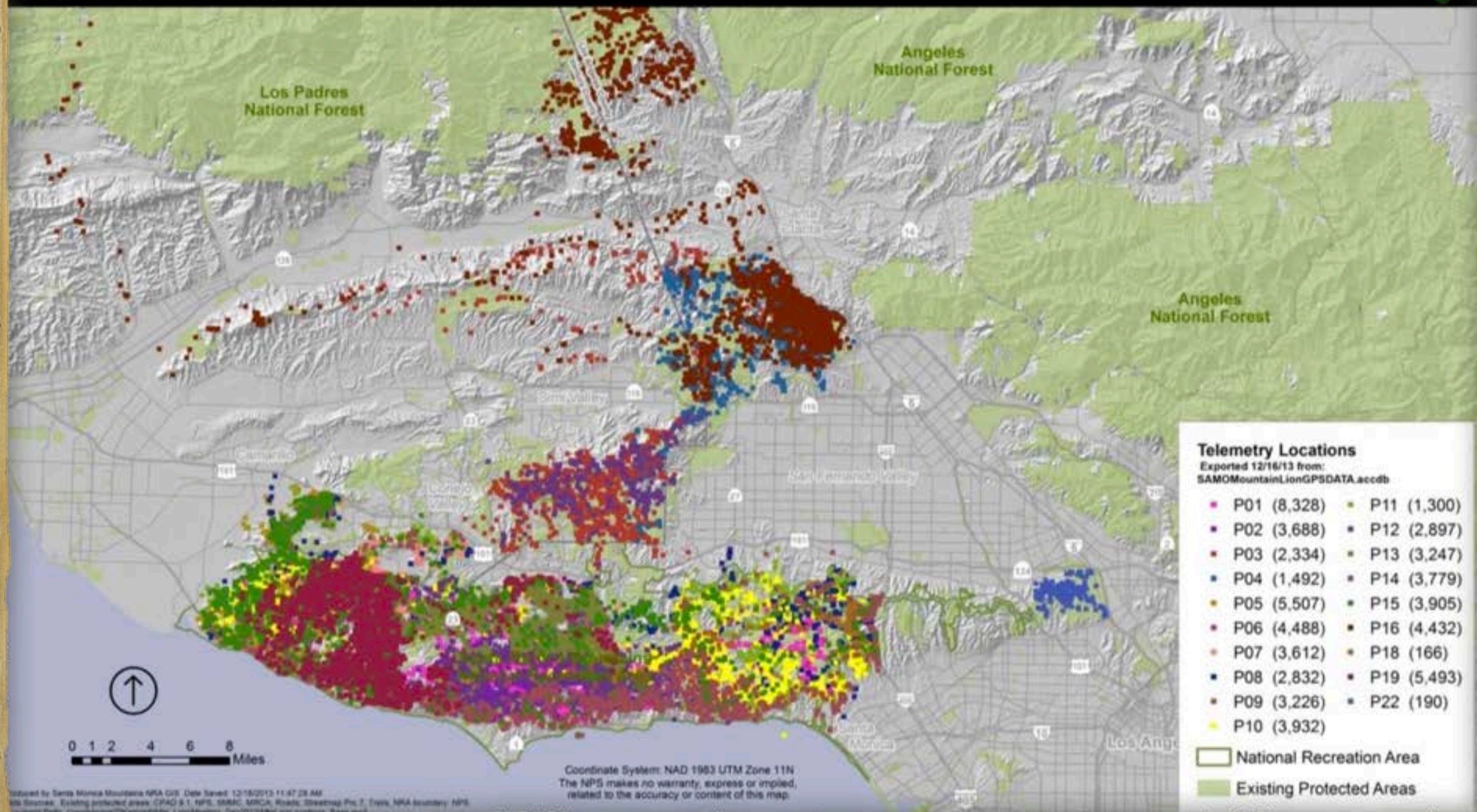
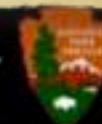
Permanently protects Boeing
Property from development,
agriculture or industrial
activity!

The SSMPA is part of their
Resource Management Plan

Mountain Lion Locations

Santa Monica Mountains National Recreation Area

National Park Service
U.S. Department of the Interior



What's Next?

May-July 2018, Organizational/Administration

August-September, Acorn Collection

October, Stratification/Germination, Potting Parties

December 15, 1st planting

Planting Parties every 2 weeks for Dec-March



Special thanks to;
Daniel Brin
Chatsworth Kiwanis
MRCA, especially Paul Edelman
California Dept of Parks & Rec
SSMPA BoD
L.A. Recreation And Parks
Rosí Dagit
Kamara Sams & Paul Costa of
Sky Valley (SSFL)
LA Co. Supervisor
Kathryn Barger
&
Jerrod DeGonia
And all the amazing volunteers who
have contributed to this vision.





UNLESS someone like
you
cares a whole awful lot,
nothing is going to get
better.

It's not.

It's a Truffula Seed.

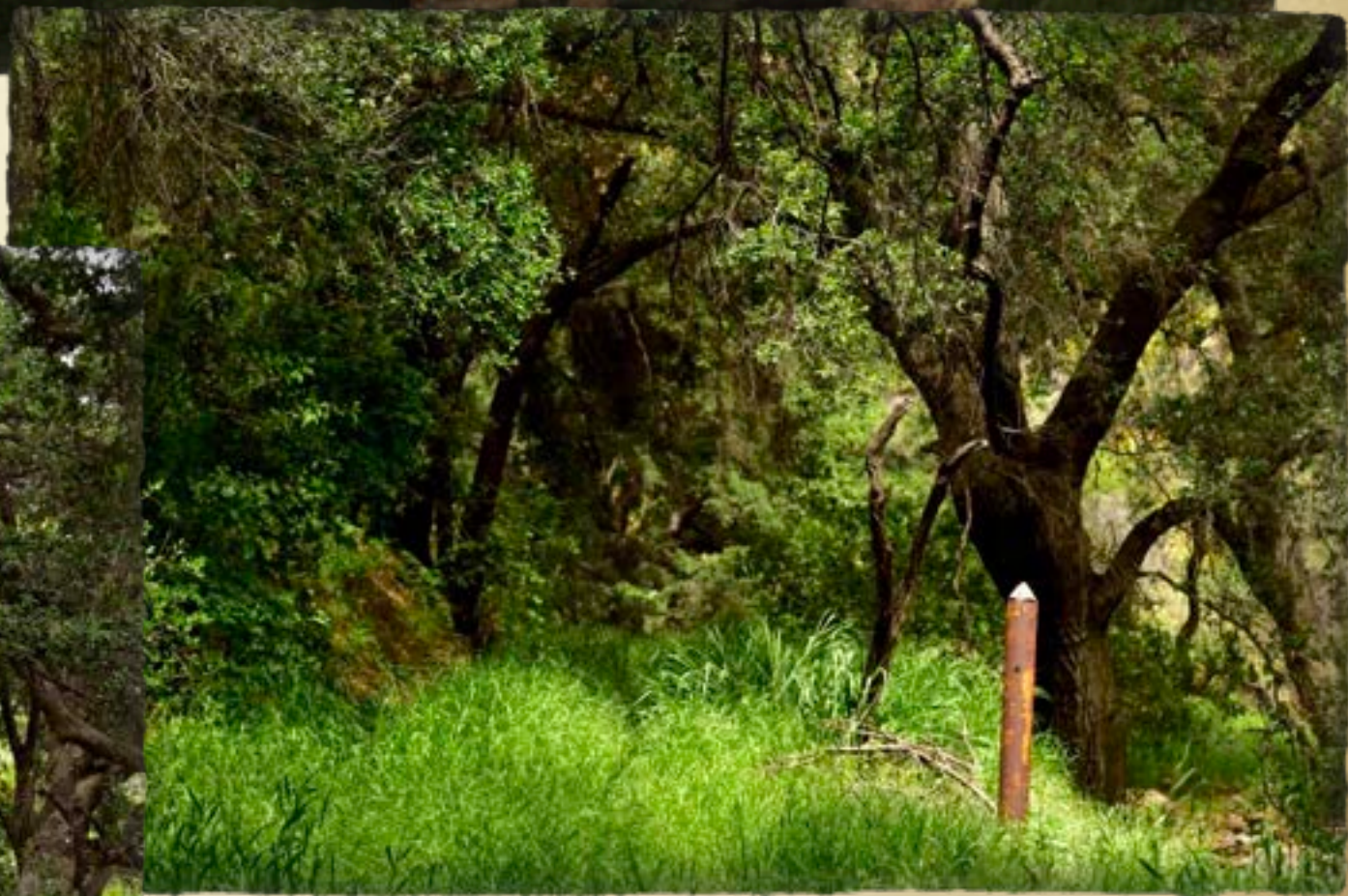
It's the last one of all!

You're in charge of the last of the Truffula Seeds. And Truffula
Trees are what everyone needs. Plant a new Truffula. Treat it
with care.

Give it clean water. And feed it fresh air.

Grow a forest. Protect it from axes that hack. Then the Lorax
and all of his friends
may come back."











Immediate needs,
\$18,000 in start
up costs, 1st Year







*Dayton Canyon Habitat Restoration,
Oak Tree Propagation Program*



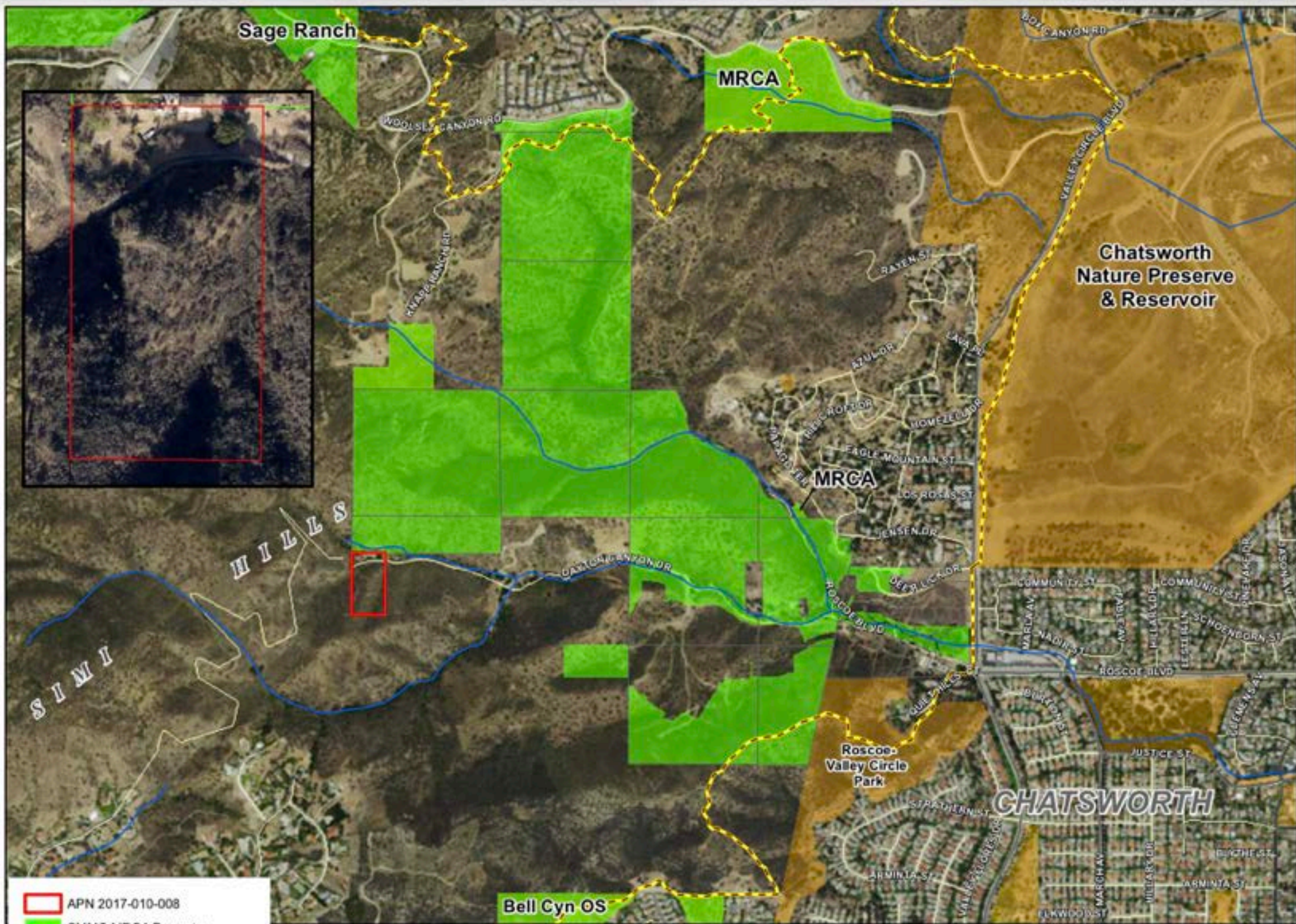
Sky Valley (SSFL)

Creekbed Rehabilitation





Sage Ranch
2nd Planting, 2/24/2018



- APN 2017-010-008
- SMMC MRCA Property
- Other Public Land
- Rim of the Valley Trail (concept)

Agenda Item VI(r)
MRCA
6/7/17



Save Chatsworth, Inc.
501 (C) 3
New Board of Directors.

A rag-tag group of mis-matched misfits, fighting insurmountable odds against a far superior force, in order to save the world!

OR;

A group of dedicated environmental stewards, working diligently to preserve protect and restore the Mountains above Chatsworth and the West Valley.

Possibly both...?



If you are interested in changing the World, please
contact John Luker via email; jcluker2@yahoo.com
or, Wendi Gladstone; ssmpawendi@gmail.com







Long term watering.
Kiwanis of Chatsworth
loan of mobile water
tank. Kiwanis Key Club
of Taft High School